

Adventures in Improvised Living - Building 21st Century Skills

Julie Wilson – Keep Scotland Beautiful

**:: something you understand
well ::**

**:: how did you come to
understand it ::**

**:: how do you know you
understand it ::**

:: Our society is changing rapidly and this calls for new skills for learning, working and living together, including those that help us to do well in unpredictable and unfamiliar situations ::

**:: our world is changing - we need to
move through it in a different way ::**



**:: the creative
re-negotiation
of new and
unusual
spaces ::**



**:: it's about embracing life as meaning
making activity ::**





:: it's about life as the
art of graceful
subversion ::

:: how do
we learn
to do
that ? ::

:: What kind of learning journeys do people need to make to form the attributes, dispositions and skills they need to learn to move through life with resilience and grace ? ::

:: results from extensive international research support the view that the learning and development needs of our children and young people are powerfully met through environments that have four characteristics ::

- **Situated (real-life, real-world, real-time)**
- **Constructed (through open ended inquiry and solution finding in social relationships)**

- **Self-directed (shaped around the needs and interests of the learner and driven by them)**
- **Collaborative (shared and inclusive)**

Adaptive Expertise - the ability to apply meaningfully-learned knowledge and skills flexibly and creatively in different situations.

**Eric De Corte - The Nature of Learning OECD 2010
OECD 2012 - Innovative Learning Environments Projects - How can the learning sciences inform the design of 21st century learning environments?**





Critical thinking & problem-solving

Effective oral & written communication



Collaboration across networks



Initiative & entrepreneurialism



Agility & adaptability

Changes Ahead



Curiosity and imagination

Hope & Optimism



Skills & Attributes of Today's Learner



Resilience



Self-Regulation



Vision



Empathy & Global Stewardship

21st Century Skills & Attributes - Educator Self-Assessment



Oral & written communication

- ✓ Do you provide learners with lots of opportunities to speak and write using their own unique and genuine voices?
- ✓ Do you help learners create focus, energy, passion around the oral & written communications they want to make?



Critical thinking problem-solving

- ✓ Do you promote and reinforce doing things that haven't been done before, where you and your learners have to rethink or think anew?
- ✓ Do you ask learners to generate & ask their own unique essential questions?



Collaboration across networks

- ✓ Do you facilitate global communication and collaboration with your learners?
- ✓ Do you give learners opportunities to collaborate face-to-face and virtually?
- ✓ Do you assist your learners in developing their own personal learning networks?



Curiosity and imagination

- ✓ Do you promote, encourage, and reinforce inquisitiveness?
- ✓ Do you encourage your learners to add their own "personal touches" to their learning experiences?



Initiative & entrepreneurialism

- ✓ Do you assist learners in becoming involved in meaningful work?
- ✓ Do you provide opportunities for learners to take risks; take their own initiative to do things?



Agility & adaptability

- ✓ Do you accept change as normal & natural; and assist your learners in doing so, too?
- ✓ Are you and your learners flexible?
- ✓ Do you and your learners use a variety of tools to solve new problems?



Hope & Optimism

- ✓ Do you model, teach, reinforce positive self talk? A Can Do attitude?
- ✓ Do you assist learners in enhancing their personal agency thinking?
- ✓ Do you expose learners to stories that portray how others have succeeded or overcome adversity?



Self-Regulation

- ✓ Do you model and assist learners in developing and understanding their own metacognitive processes?
- ✓ Do you help learners develop their own ability to self-motivate?
- ✓ Do you assist learners in reflecting on and evaluating their learning experiences?



Empathy & Global Stewardship

- ✓ Do you provide learners with opportunities for perspective taking?
- ✓ Do you assist learners in understanding the interdependence of all living systems?
- ✓ Do create opportunities for learners to put empathy into action; engage in pro-social behavior intended to benefit others?



Resilience

- ✓ Do you help learners see failures as opportunities for growth?
- ✓ Do encourage and reinforce learners' own innate resiliency?
- ✓ Do you insure that each and every learner knows "You Matter?"



Grit

- ✓ Do you give learners opportunities to work on long-term, complex projects?
- ✓ Do assist learners in identifying and acknowledging the rewards of persevering through tough times?

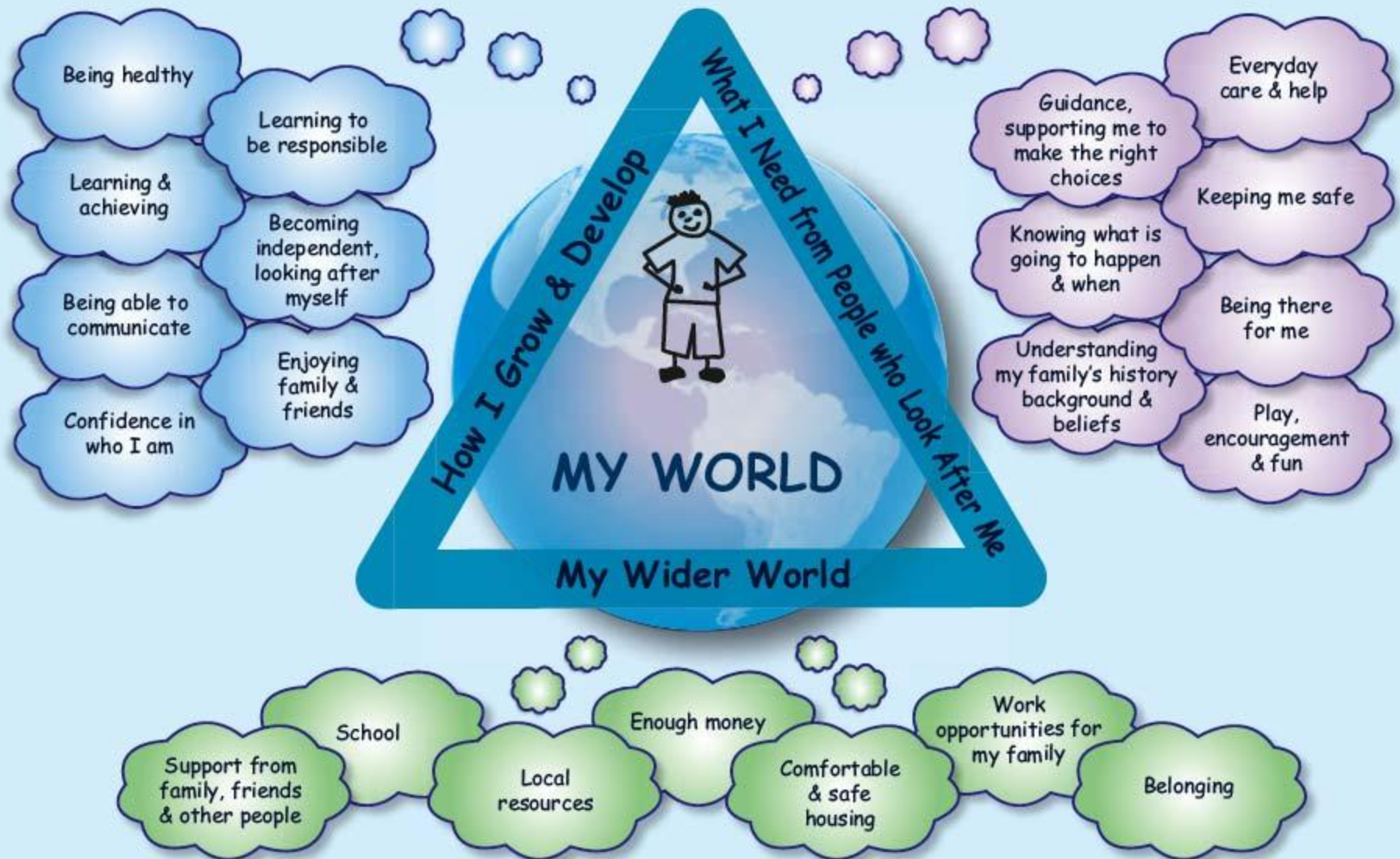


Vision for the Future

- ✓ Do you give learners the time, resources, opportunity to identify and pursue their dreams?
- ✓ Do you assist learners in developing the steps and strategies needed to achieve their dreams?

My World Triangle

getting
it right
for every child



The whole child or young person: Physical, Social, Educational, Emotional, Spiritual & Psychological development

:: All over the world educators are finding that developing these learning and teaching strategies is having an impact on young people's readiness to learn, their motivation towards and engagement in learning and their ability to demonstrate autonomy, persistence, adaptability and creativity as learners ::

**We are called upon to live our lives in
more dynamic, contingent
and improvised ways.**

**How can we create opportunities for
playful and adventurous learning that
equip our young people for living well
with change and uncertainty, risk and
challenge, creativity and innovation?**

Thank you so much!

Julie.Wilson@ksbscotland.org.uk



**Keep Scotland
Beautiful**